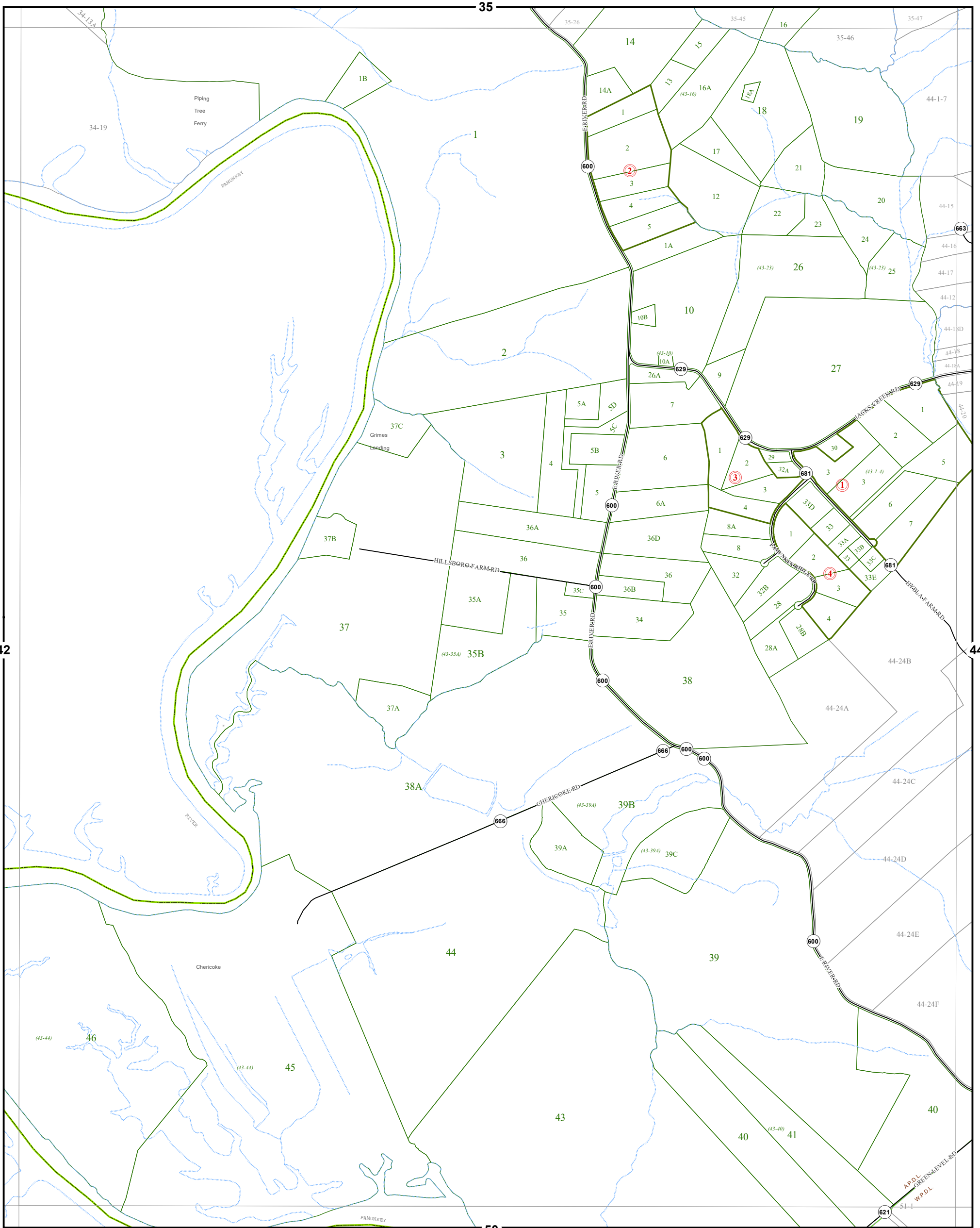


KING WILLIAM COUNTY

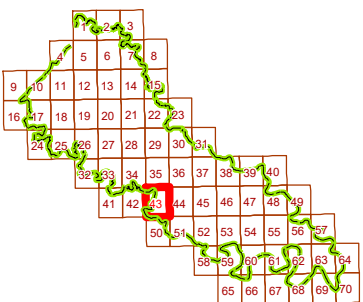
Last Updated May 2017

Map information is believed to be accurate, but accuracy is not guaranteed. Any errors or omissions should be reported to the Commissioner of Revenue's office. In no event will King William County be liable for any damages or other pecuniary loss that may arise from the use of this data.



ACQUINTON & WEST POINT DISTRICT

SECTION 43



LEGEND

- County Boundary
- Routes
- Lots
- District Boundaries
- Streams
- Railroads
- Roads / Alleys
- Sections
- Blocks
- Water Bodies

